



Medium

## MAMBA 06 LOW

MAMBALOW

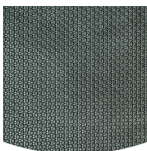
lightweight, sporty and waterproof low-cut

MAMBA 06 LOW offers superior foot protection with its waterproof membrane, rubber outsole and cold insulation.

Upper	TPU, Mesh, Textile
Lining	Membrane
Footbed	SJ foam footbed
Outsole	Phylon/Rubber (NBR)
Category	O6 / SR, SC, HI, HRO, CI, ESD
Size range	EU 36-48 / UK 3.5-13.0 / US 4.0-13.5 JPN 22.5-31.5 / KOR 235-315
Sample weight	0.390 kg
Norms	EN ISO 20347:2022+A1:2024 ASTM F2892:2024

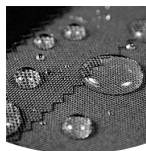


BLK



### Rubber outsole

Rubber outsoles provide versatile functions that make them suitable for many areas of application: excellent cut resistance, heat and cold resistance, high flexibility at cold temperatures, resistance against oil, fuel and many chemicals.



### Waterproof lining

Keeps your feet dry and comfortable in wet environments.

**Industries:**

Tactical, Uniform

**Environments:**

Extreme slippery surfaces, Wet environment

**Maintenance instructions:**

To extend the life of your shoes, we recommend to clean them regularly and to protect them with adequate products. Do not dry your shoes on a radiator, nor nearby a heat source.

	Description	Measure unit	Result	EN ISO 20347
<b>Upper</b>	<b>TPU, Mesh, Textile</b>			
	Upper: permeability to water vapor	mg/cm <sup>2</sup> /h	3.9	≥ 0.8
	Upper: water vapor coefficient	mg/cm <sup>2</sup>	32.3	≥ 15
<b>Lining</b>	<b>Membrane</b>			
	Lining: permeability to water vapor	mg/cm <sup>2</sup> /h	4.90	≥ 2
	Lining: water vapor coefficient	mg/cm <sup>2</sup>	41	≥ 20
<b>Footbed</b>	<b>SJ foam footbed</b>			
	Footbed: abrasion resistance (dry/wet) (cycles)	cycles	Dry 25600 cycles/Wet 12800 cycles	25600/12800
<b>Outsole</b>	<b>Phylon/Rubber (NBR)</b>			
	Outsole abrasion resistance (volume loss)	mm <sup>3</sup>	59	≤ 150
	Basic Slip resistance - Ceramic + NaLS - Forward heel slip	friction	0.46	≥ 0.31
	Basic Slip resistance - Ceramic + NaLS - Backward forepart slip	friction	0.47	≥ 0.36
	SR Slip resistance - Ceramic + glycerin - Forward heel slip	friction	0.28	≥ 0.19
	SR Slip resistance - Ceramic + glycerin - Backward forepart slip	friction	0.25	≥ 0.22
	Antistatic value	MegaOhm	25.0	0.1 - 1000
	ESD value	MegaOhm	38	0.1 - 100
	Heel energy absorption	J	37	≥ 20

Sample size: 42

Our shoes are constantly evolving, the technical data above may change. All product names and brand Safety Jogger, are registered and may not be used or reproduced in any format, without written consent from us.