

CLIFTON

MUKUA

MK242WV [White] MK242CV [Colours]



Unisex long sleeve polo

210g/m²

Piqué fabric

35% RingSpun cotton

65% Polyester

S — 5XL

3 button placket

Reinforced neck tape to avoid deformation

1x1 rib knit collar

Cuff with elastane for greater elasticity and to avoid deformation

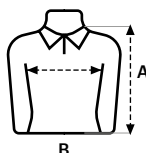
Sideseamed with side vents

Regular fit

SIZES

	S	M	L	XL	2XL	3XL	4XL	5XL
A	69	71	73	75	77	79	81	83
B	50	53	56	59	63	67	71	75

Measurements in cm. Tolerance +/- 5%



100 White



202 Heather Grey



200 Black



500 Navy



502 Royal Blue



501 Sky Blue



602 Bottle Green



103 Sand



301 Orange



400 Red

202 Heather Grey 85% Cotton - 15% Viscose

Removable label

50 pieces per box

5 pieces per bag